

FO passive components

OptoWire Adapter

SC/UPC simplex

- ≤ 0.2 dB (Typical) Low Insertion Loss
- Color Coded for Rapid Fiber Management
- Protective Dust Cap Keeps Adapter's Interior Clean from Dust
- Stainless Steel Clips for Tool-less Snap-in Installation



Body Style	Simplex	Polish Type	UPC
Connector Type	SC-SC	Fiber Mode	OS2 9/125μm
Insertion Loss	≤ 0.2 dB	Alignment Sleeve Material	Ceramic
Working Temperature	-25~70°C	Durability	1000 times

SC/UPC duplex

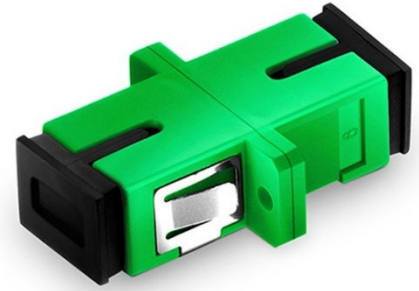
- ≤ 0.2 dB (Typical) Low Insertion Loss
- Color Coded for Rapid Fiber Management
- Protective Dust Cap Keeps Adapter's Interior Clean from Dust
- Stainless Steel Clips for Tool-less Snap-in Installation



Body Style	Duplex	Polish Type	UPC
Connector Type	SC-SC	Fiber Mode	OS2 9/125μm
Insertion Loss	≤ 0.2 dB	Alignment Sleeve Material	Ceramic
Working Temperature	-25~70°C	Durability	1000times

SC/APC simplex

- ≤ 0.2 dB (Typical) Low Insertion Loss
- Color Coded for Rapid Fiber Management
- Protective Dust Cap Keeps Adapter's Interior Clean from Dust
- Stainless Steel Clips for Tool-less Snap-in Installation



Body Style	Simplex	Polish Type	UPC
Connector Type	SC-SC	Fiber Mode	OS2 9/125μm
Insertion Loss	≤ 0.2 dB	Alignment Sleeve Material	Ceramic
Working Temperature	-25~70°C	Durability	1000 times

SC/APC duplex

- ≤ 0.2 dB (Typical) Low Insertion Loss
- Color Coded for Rapid Fiber Management
- Protective Dust Cap Keeps Adapter's Interior Clean from Dust
- Stainless Steel Clips for Tool-less Snap-in Installation



Body Style	Duplex	Polish Type	APC
Connector Type	SC-SC	Fiber Mode	OS2 9/125μm
Insertion Loss	≤ 0.2 dB	Alignment Sleeve Material	Ceramic
Working Temperature	-25~70°C	Durability	1000 times

LC/APC simplex

- ≤ 0.2 dB (Typical) Low Insertion Loss
- Color Coded for Rapid Fiber Management
- Protective Dust Cap Keeps Adapter's Interior Clean from Dust
- Stainless Steel Clips for Tool-less Snap-in Installation



Body Style	Simplex	Polish Type	APC
Connector Type	LC - LC	Fiber Mode	OS2 9/125μm
Insertion Loss	≤ 0.2 dB	Alignment Sleeve Material	Ceramic
Working Temperature	-25~70°C	Durability	1000 times

LC/APC duplex

- ≤ 0.2 dB (Typical) Low Insertion Loss
- Color Coded for Rapid Fiber Management
- Protective Dust Cap Keeps Adapter's Interior Clean from Dust
- Stainless Steel Clips for Tool-less Snap-in Installation



Body Style	Duplex	Polish Type	APC
Connector Type	LC - LC	Fiber Mode	OS2 9/125μm
Insertion Loss	≤ 0.2 dB	Alignment Sleeve Material	Ceramic
Working Temperature	-25~70°C	Durability	1000 times

LC/UPC simplex

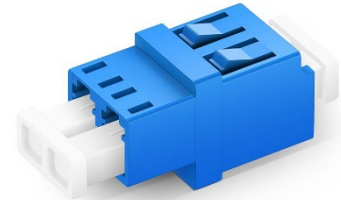
- ≤ 0.2 dB (Typical) Low Insertion Loss
- Color Coded for Rapid Fiber Management
- Protective Dust Cap Keeps Adapter's Interior Clean from Dust
- Stainless Steel Clips for Tool-less Snap-in Installation



Body Style	Simplex	Polish Type	UPC
Connector Type	LC - LC	Fiber Mode	OS2 9/125μm
Insertion Loss	≤ 0.2 dB	Alignment Sleeve Material	Ceramic
Working Temperature	-25~70°C	Durability	1000 times

LC/UPC duplex

- ≤ 0.2 dB (Typical) Low Insertion Loss
- Color Coded for Rapid Fiber Management
- Protective Dust Cap Keeps Adapter's Interior Clean from Dust
- Stainless Steel Clips for Tool-less Snap-in Installation



Body Style	Duplex	Polish Type	UPC
Connector Type	LC - LC	Fiber Mode	OS2 9/125μm
Insertion Loss	≤ 0.2 dB	Alignment Sleeve Material	Ceramic
Working Temperature	-25~70°C	Durability	1000 times

SC/UPC-LC/UPC simplex

- ≤ 0.5 dB(Typical) Low Insertion Loss
- Color Coded for Rapid Fiber Management
- Protective Dust Cap Keeps Adapter's Interior Clean from Dust
- Stainless Steel Clips for Tool-less Snap-in Installation



Body Style	Simplex	Polish Type	UPC
Connector	SC - LC	Fiber Mode	OS2 9/125μm
Insertion Loss	≤ 0.5 dB	Alignment Sleeve Material	Ceramic
Working Temperature	-25~70°C	Durability	1000 times